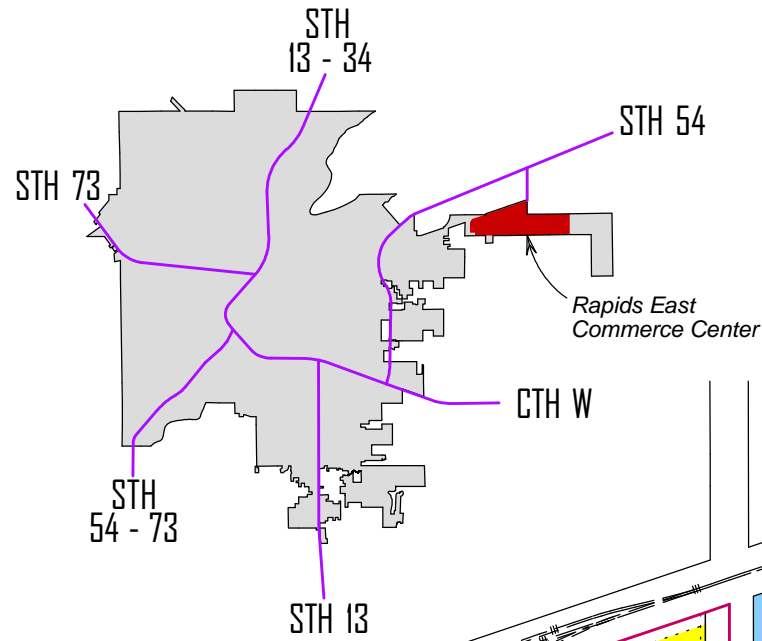
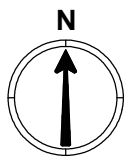
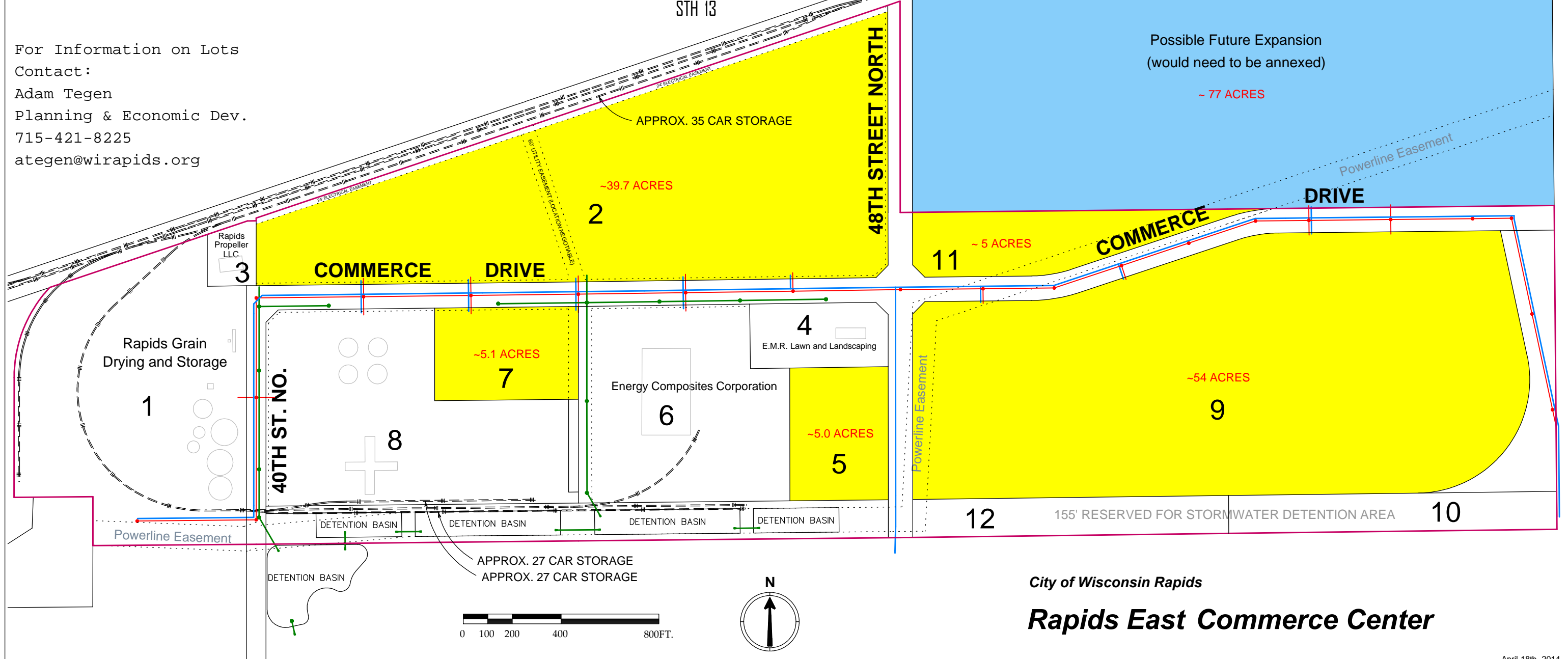


- 1 - 09837 ALLIED COOPERATIVE (22.75A)
- 2 - 09841 COWR (41.29A)
- 3 - 09842 JL WOLF PROPERTIES LLC (1.12A)
- 4 - 09852 EDWARD M. RADLINGER (3.40A)
- 5 - 09853 COWR (5.02A)
- 6 - 09854 ADVANCED FIBERGLASS TECHNOLOGIES INC. (14.26A)
- 7 - 09855 COWR (5.12A)
- 8 - 09858 THE ANDERSONS INC. (18.05A)
- 9 - 09861 COWR (54.15A)
- 10 - 09862 COWR (9.16A)
- 11 - 09863 COWR (5.96A)
- 12 - 09864 COWR (4.06A)

For Information on Lots
 Contact:
 Adam Tegen
 Planning & Economic Dev.
 715-421-8225
 ategen@wirapids.org



- AVAILABLE SITES
- CURRENT BOUNDARIES (213 ACRES)
- EXISTING RAILROAD TRACKS
- SANITARY SEWER
- STORM SEWER
- WATERMAIN



City of Wisconsin Rapids

Rapids East Commerce Center